

Dane County's Climate Action Plan

Madison Area Bus Advocates

March 29, 2021



Dane County Office of
Energy & Climate Change

Kathy Kuntz, Director

CAP: Pragmatic Yet Visionary

Guiding Principles

- Equity & Justice
- Economic Benefits
- Health Benefits
- Ecosystem Benefits
- Adaptation & Resiliency
- Bridging the Rural & Urban Divide

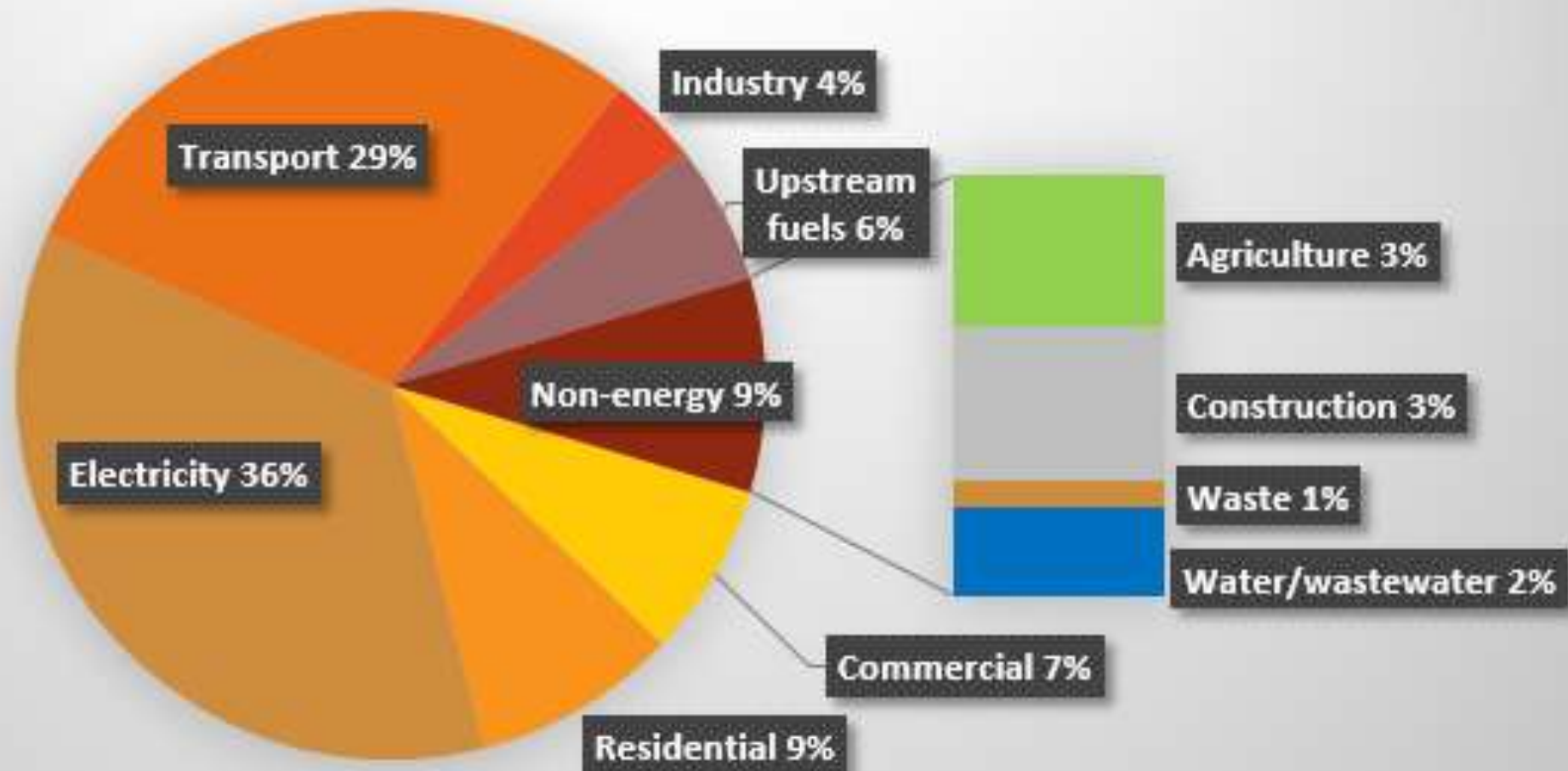
*Look at the **art of the possible**... Identify where we want to be and **figure out how to get there**... Win-win solutions should be the focus... **Look at data, find solutions.***

County Exec Joe Parisi, 1st Council Mtg



County-Wide Emissions (2016) – 7.5MMtons

Base Year Dane County Emissions (CO2-equiv)



Outcomes We're Pursuing

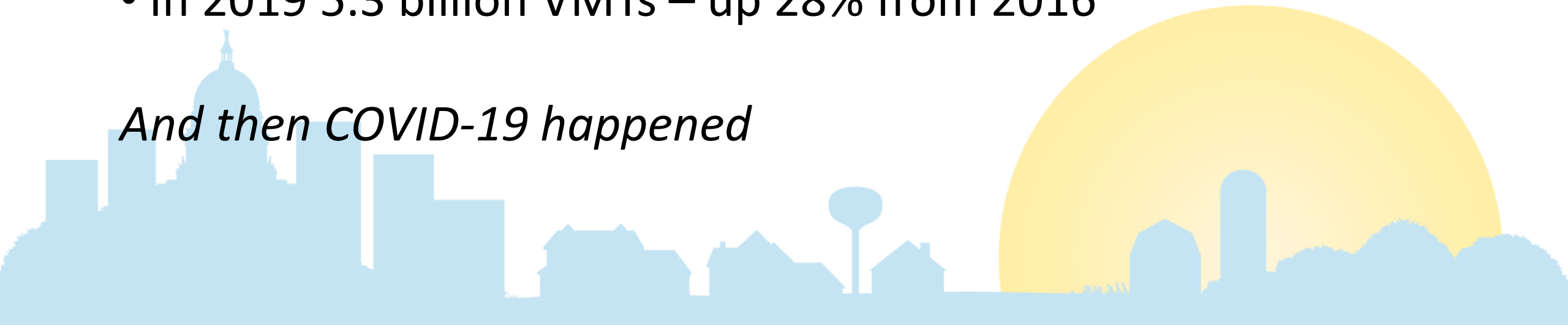
Emissions Targeted	Goal
Energy Usage	Reduce 2% annually by 2030, 3% by 2035 and 4% by 2040
Commercial building energy use	Reductions by 2025 with all new buildings using 75% less energy by 2040
Heat pumps	Convert ½ LP and oil heat homes by 2030; all by 2045 All new homes with heat pumps by 2040
Water – per capita demand	Decrease by 20% by 2030 and by 30% by 2040
Solar	1200 MW installed by 2030; with wind meet 100% of load by 2045
Wind	Meets half Dane County load by 2030; with solar meet 100% by 2045
Manure in anaerobic digesters	Half of all manure in county by 2030; 100% by 2050
Electric Vehicles (EVs)	57% sales share by 2040
Heavy-Duty Vehicles	60% use biogas by 2026
Transit buses	50% are electric by 2035
Vehicle Miles Traveled (VMTs)	15% reduction in total VMTs by 2050



Reduce Total VMTs by 15% by 2050

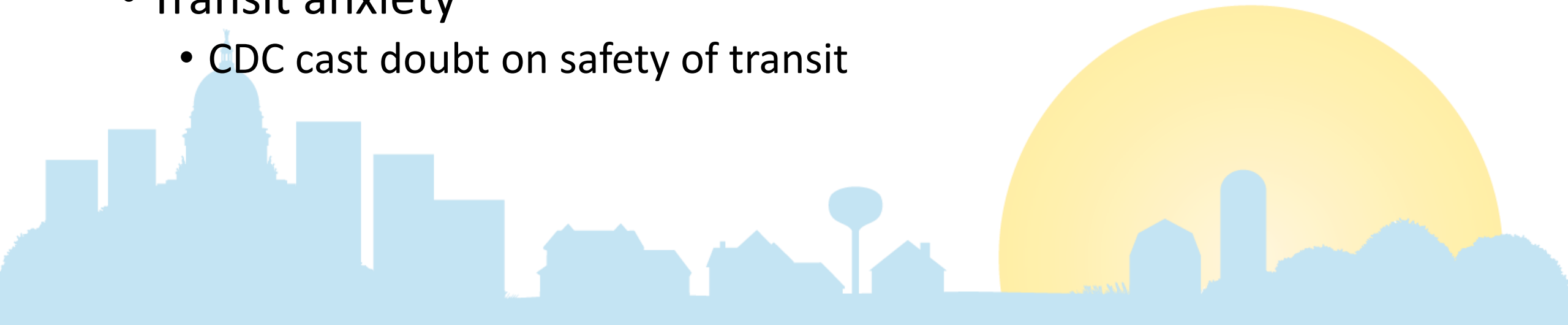
- 2016: 4.1 billion VMTs
 - 528,000 people – 7,771 VMT per capita
- 2050 3.5 billion VMTs
 - 670,000 people – 5,204 VMT per capita
- In 2019 5.3 billion VMTs – up 28% from 2016

And then COVID-19 happened



COVID & VMTs

- More telecommuting
 - If 100,000 of us work from home one day/week
110M fewer VMTs
- Surge in bikes/electric bikes
 - Might eliminate some short car trips
- Transit anxiety
 - CDC cast doubt on safety of transit



The clock is ticking...it's time for results



The CAP Is Just the Beginning...

- Sustainable Leaders Collaborative
- Climate Champions program
- Clean Energy Economic Development Grants
 - Telecommuting (Sustain Dane)
 - Transit and Health-Equity-Climate (YWCA)
- Collaboration with Others
 - Regional Affordable Housing Strategy

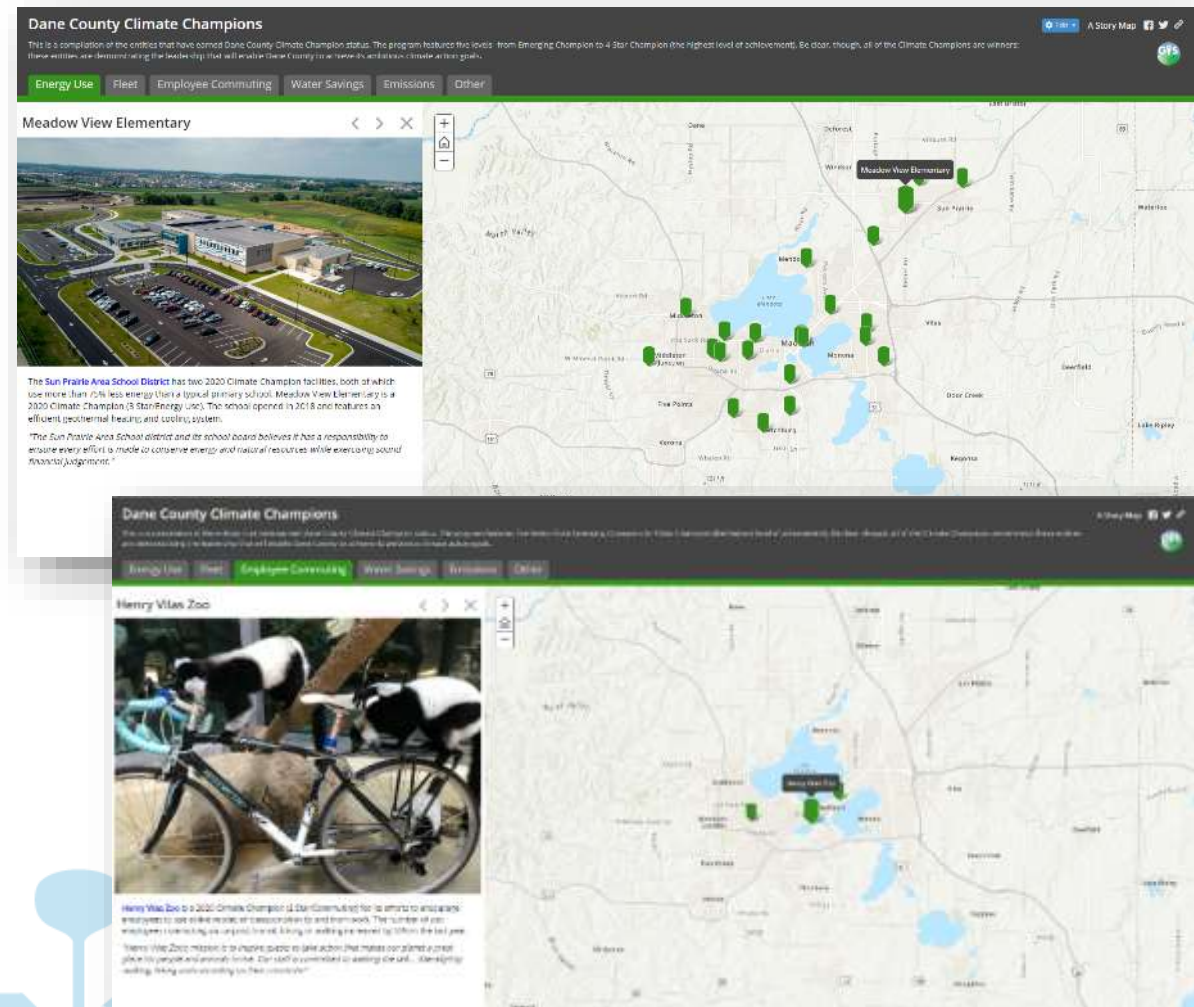


Climate Champions Program

- Recognition for entities leading on:

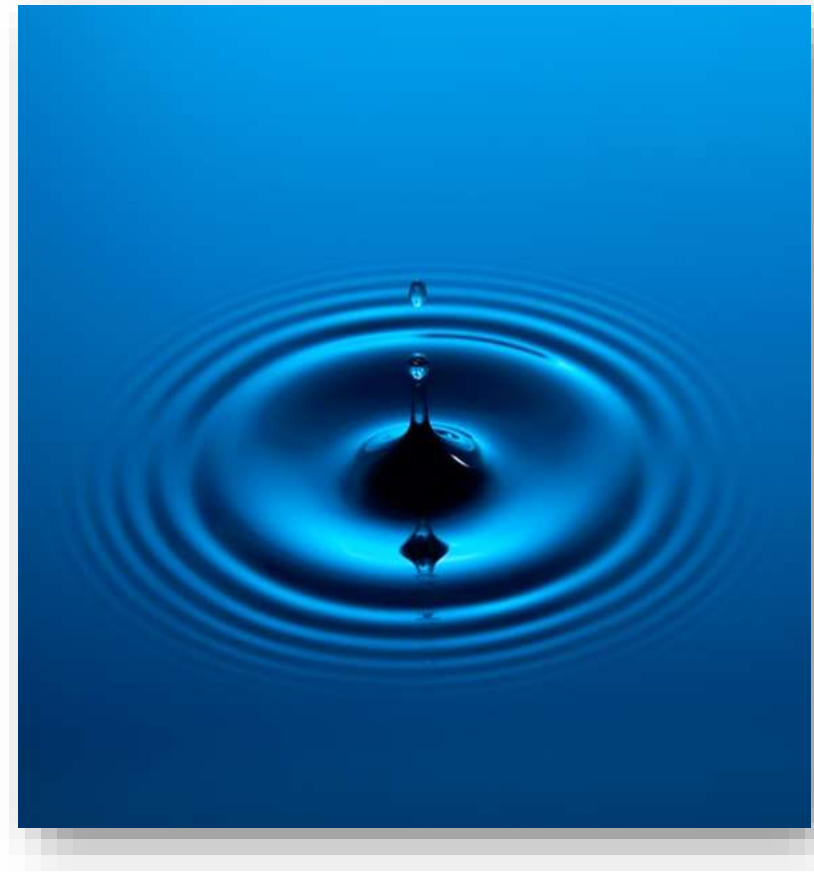
- Energy
- Water
- Fleet practices
- Employee commuting
- Waste diversion
- Carbon emissions
- Sustainable agricultural practices
- Other efforts

- ***Now accepting applications for 2021!***



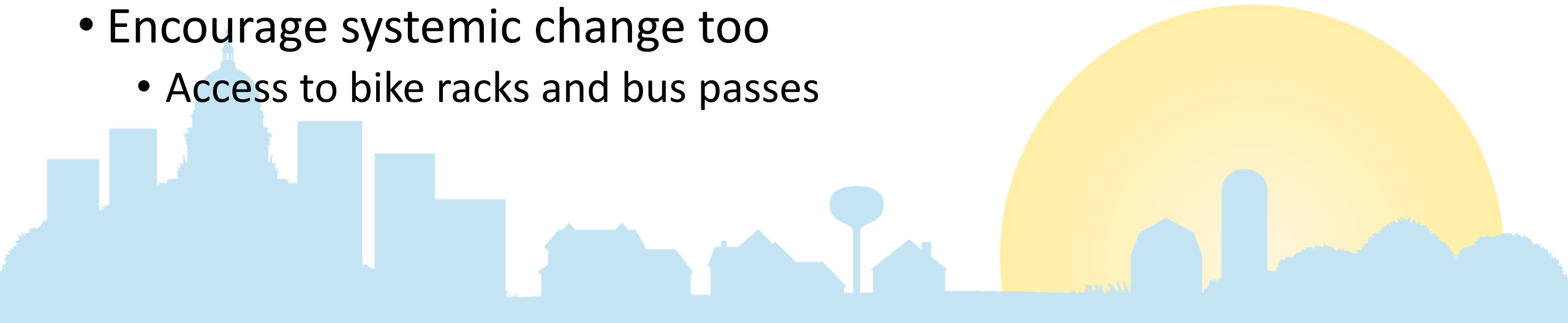
Mobilizing Everyone

- Partnerships are key
 - Faith communities
 - Workplace green teams
 - Other affinity groups
- Empower our partners
 - Be an example
 - Encourage others to action
 - Collaborate to remove barriers
 - Celebrate climate leadership



Creating a New Normal

- Make your own transit choices visible
 - Post on social media regularly
 - #DaneClimateAlly
- Use positive reinforcement with others
 - Celebrate climate leadership
- Encourage systemic change too
 - Access to bike racks and bus passes



Thanks!

Kathy Kuntz

Kuntz.Kathryn@countyofdane.com

DaneClimateAction.org



Dane County Office of
Energy & Climate Change